

ENGLISH

Chimp Software Installation

Ordercode: 55000 / 55003 / 55004 / 55010 / 55013 / 55014 / 55030 / 55031

1 Warning



**For your own safety, please read this user manual carefully
before your initial start-up!**



1.1 Safety Instructions

Every person involved with the installation and operation of this software has to:

- be qualified
- follow the instructions of this manual

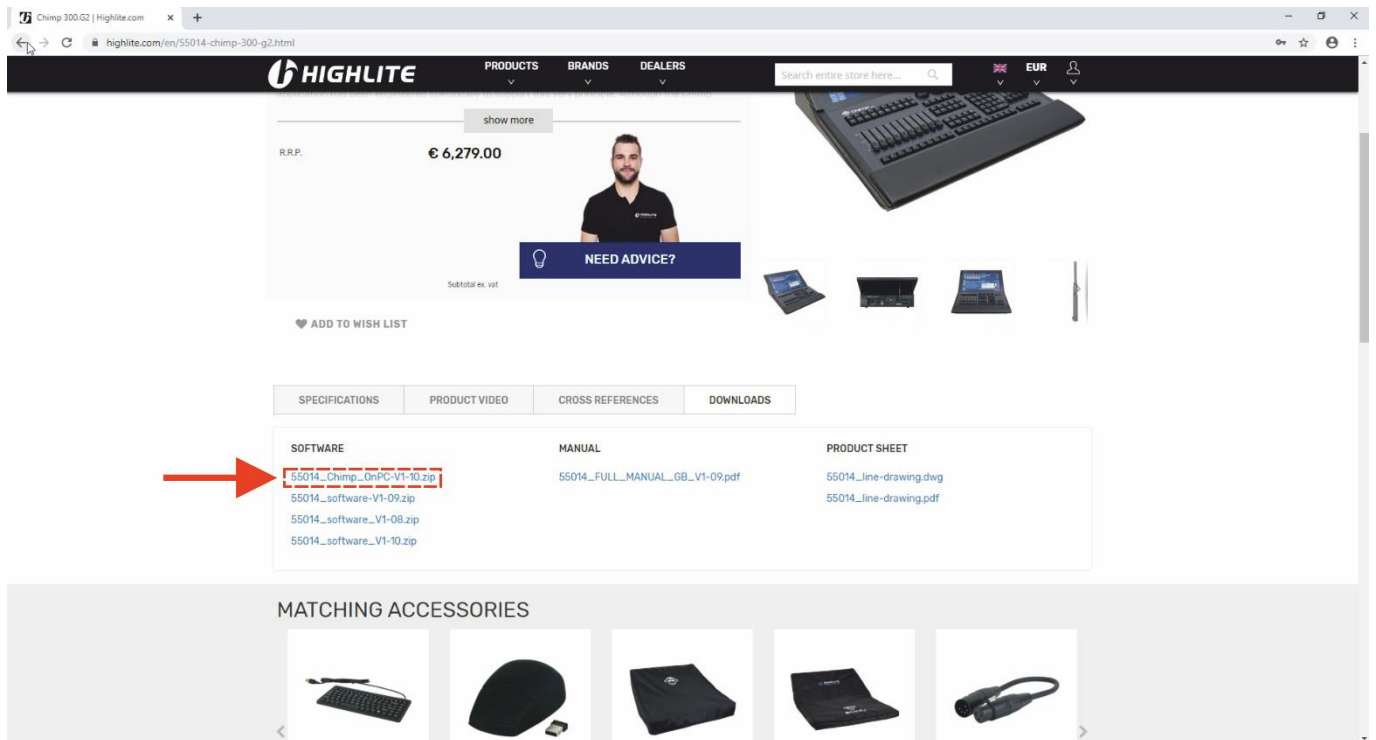
To maintain perfect condition and to ensure a safe operation, it is absolutely necessary for the user to follow the safety instructions and warning notes written in this manual.

IMPORTANT:

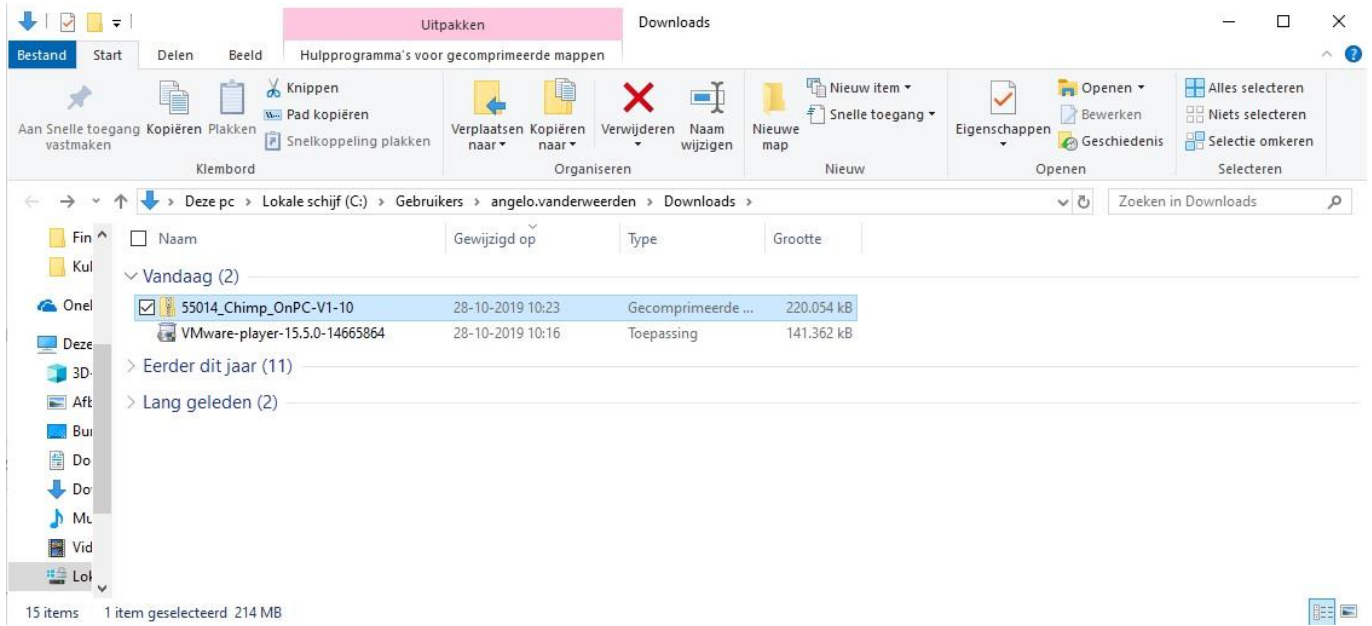
The manufacturer will not accept liability for any resulting damages caused by the non-observance of this manual or any unauthorized modification to the device.

In order to properly install the latest version of the Chimp software, please follow the following steps.

- 01) Go to the Highlite website and go to your specific Chimp console, for example: <https://www.highlite.com/en/55014-chimp-300-g2.html>
- 02) Scroll down and click on downloads.
- 03) Download your Chimp onPC software

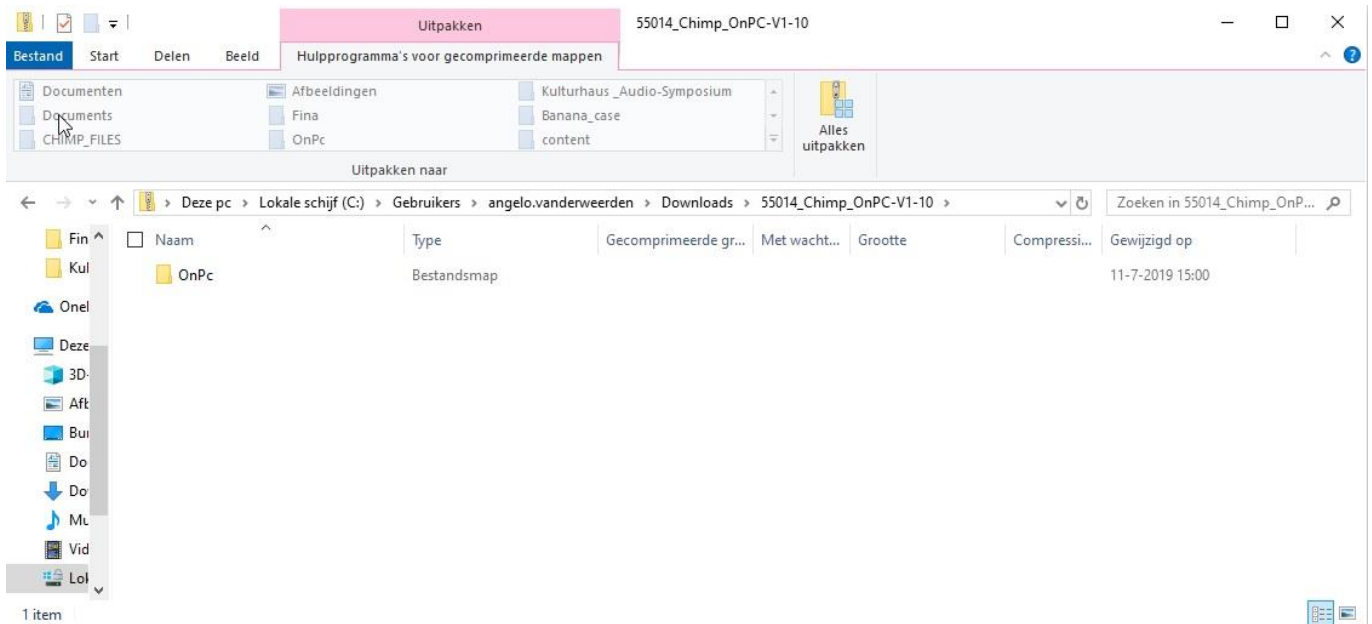


04) Go to your Microsoft explorer and go the folder, in which you've downloaded the software.



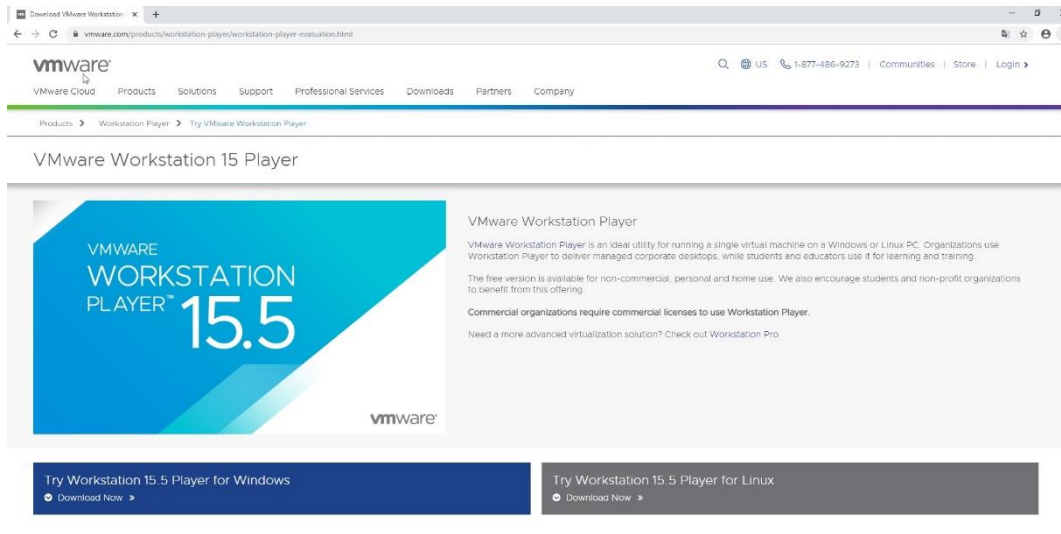
05) Unpack the downloaded Zip-file.

06) After unpacking the Zip-file, a new folder, named OnPc will appear in your explorer window:



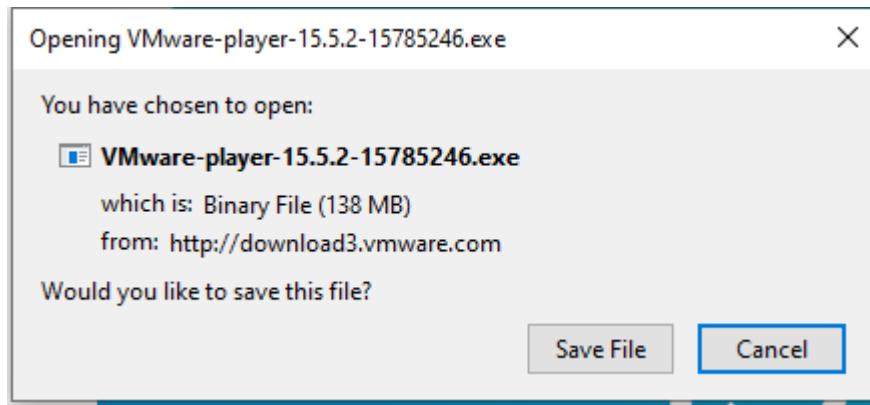
07) Go to:

<https://www.vmware.com/products/workstation-player/workstation-player-evaluation.html>



08) Download the proper software for your operating system: Windows or Linux

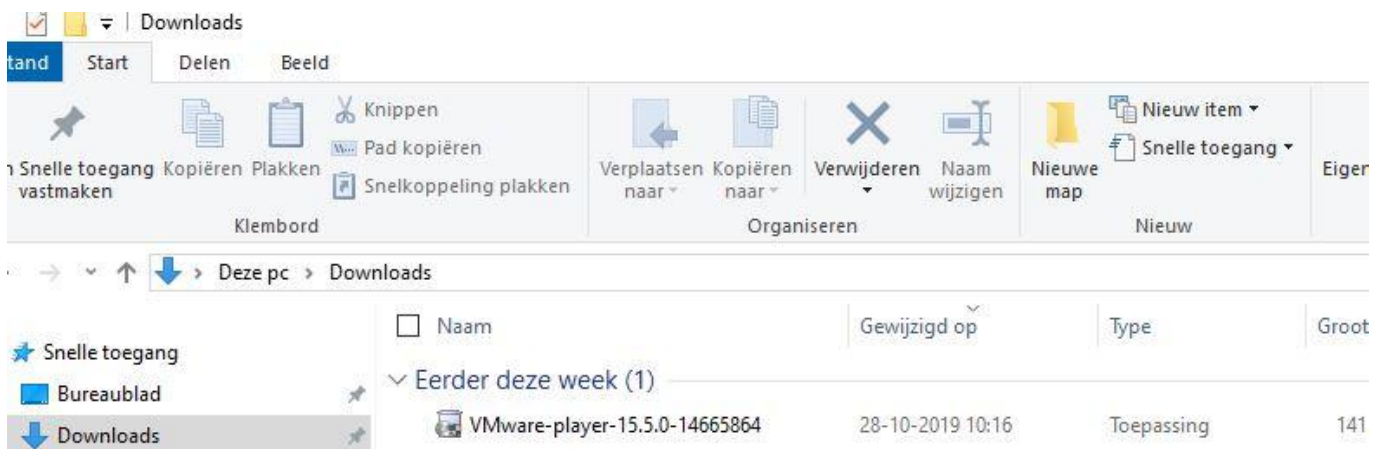
09) A popup will open:



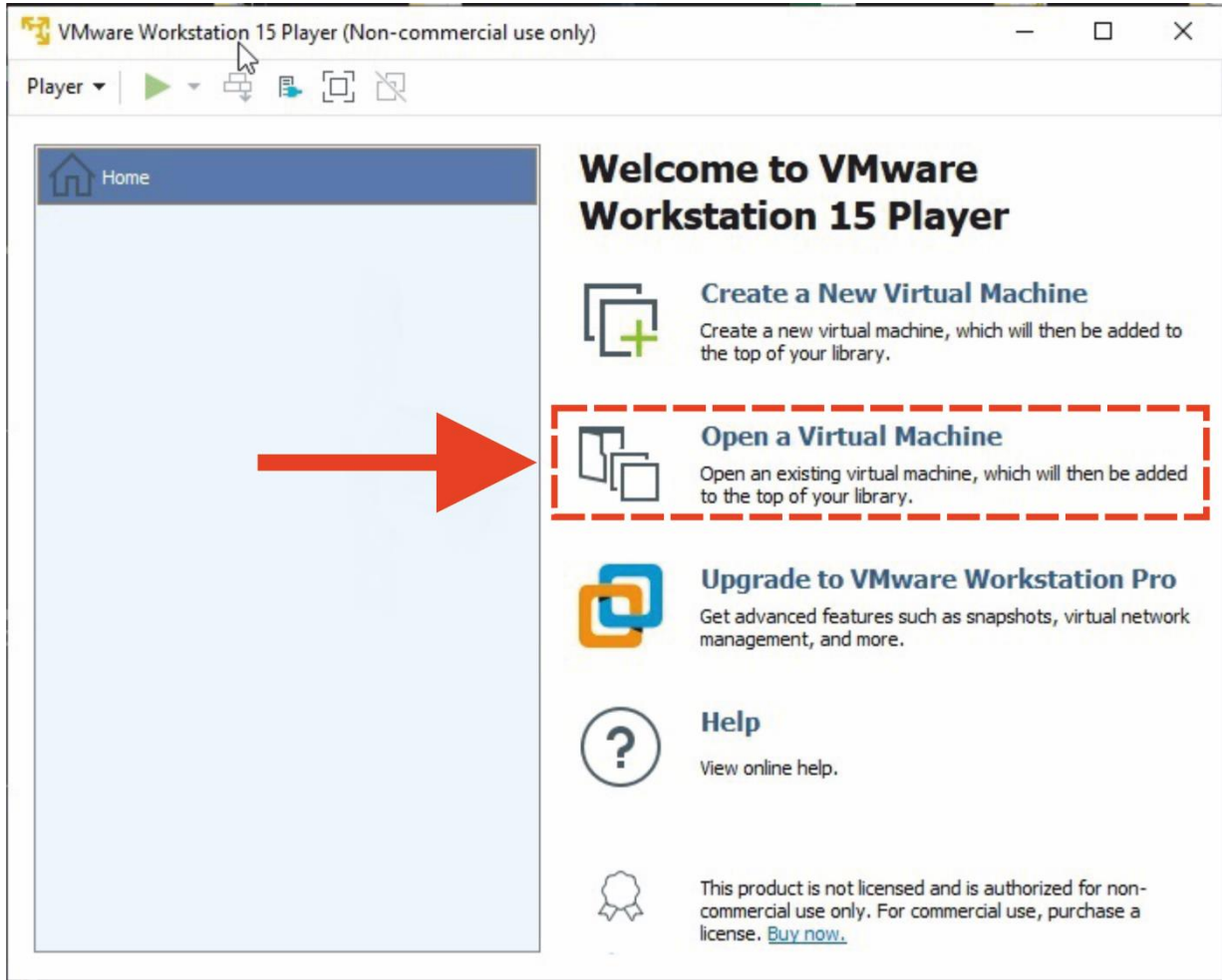
10) Click on save file.

11) Go to your Microsoft explorer and go the folder, in which you've downloaded the VMware software.

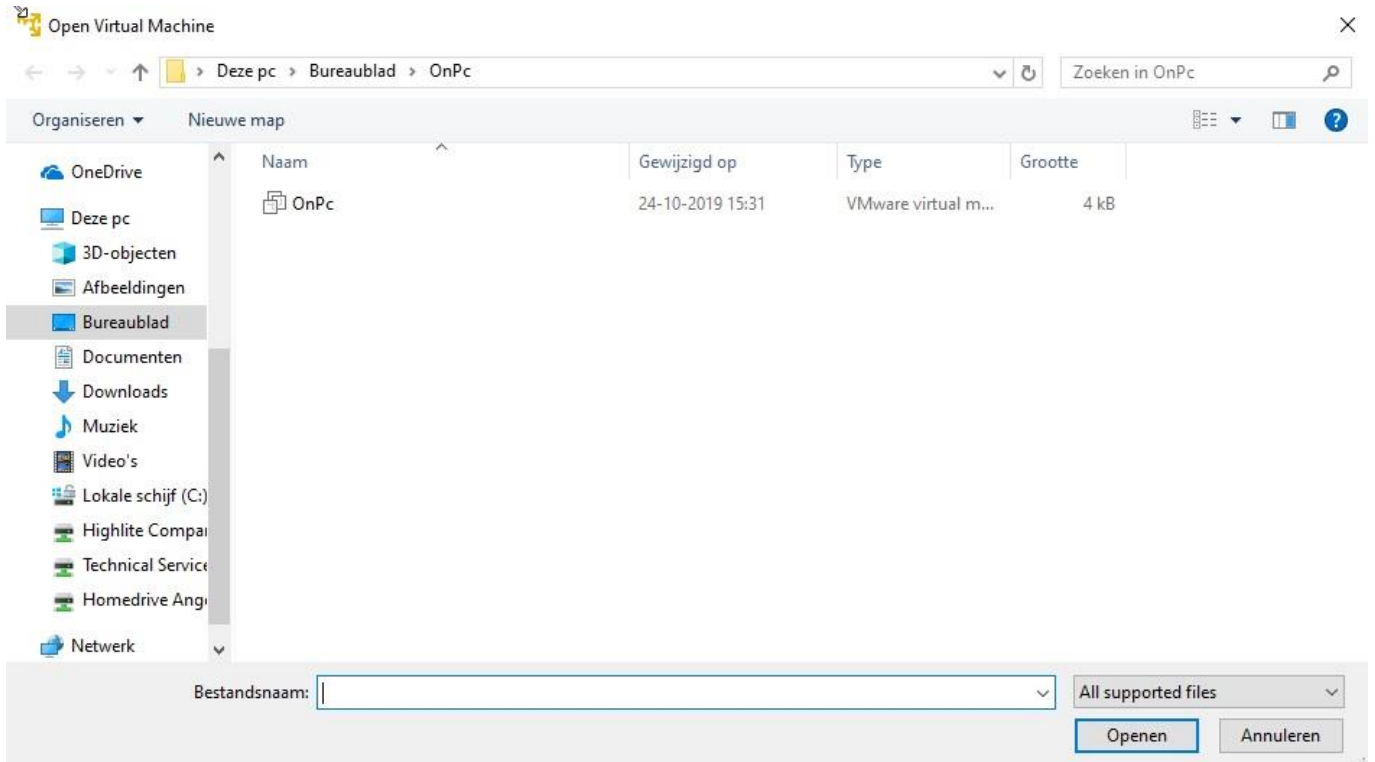
12) Install the VM software player by double-clicking on the file.



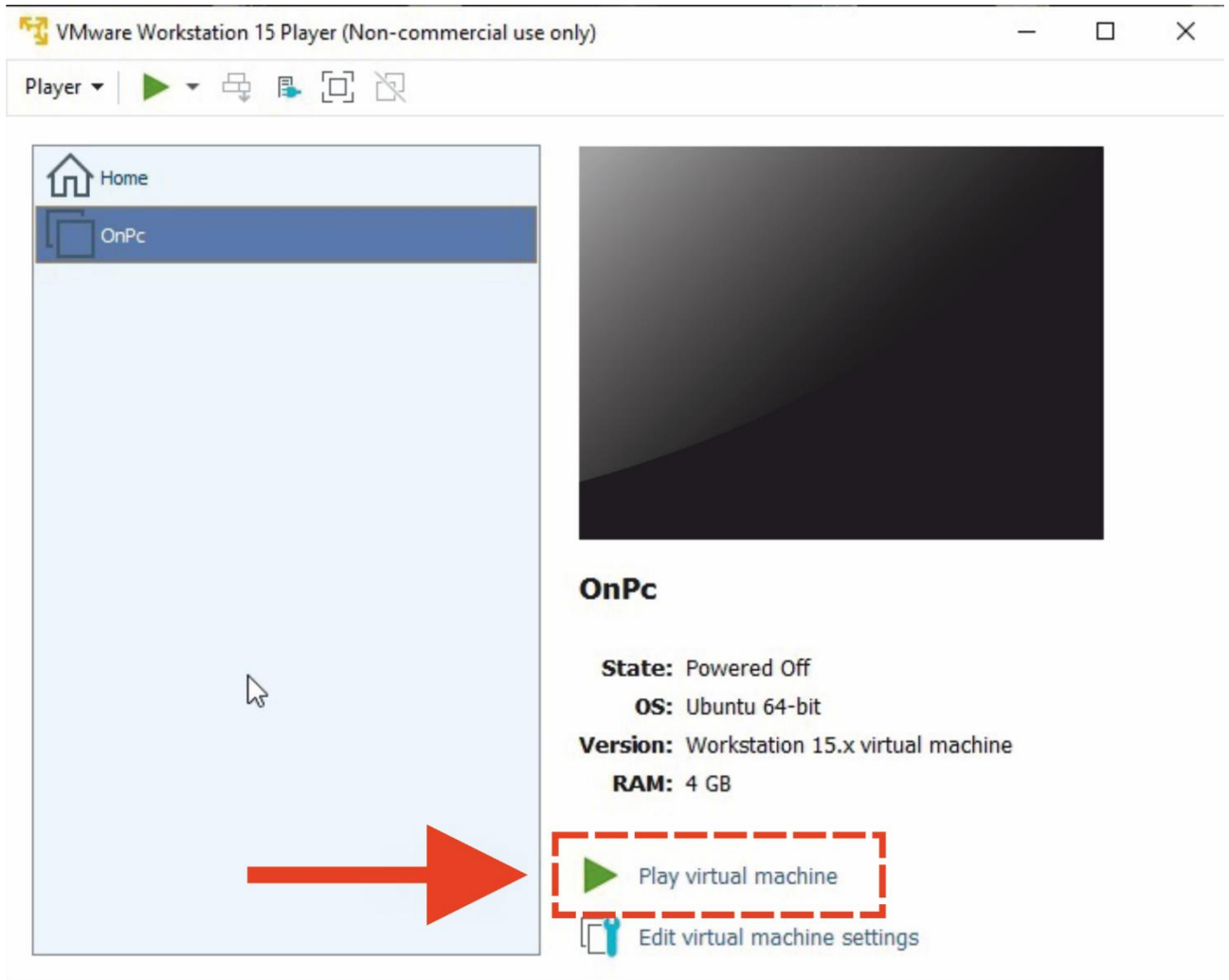
13) Start VMPlayer and select **Open a Virtual Machine**.



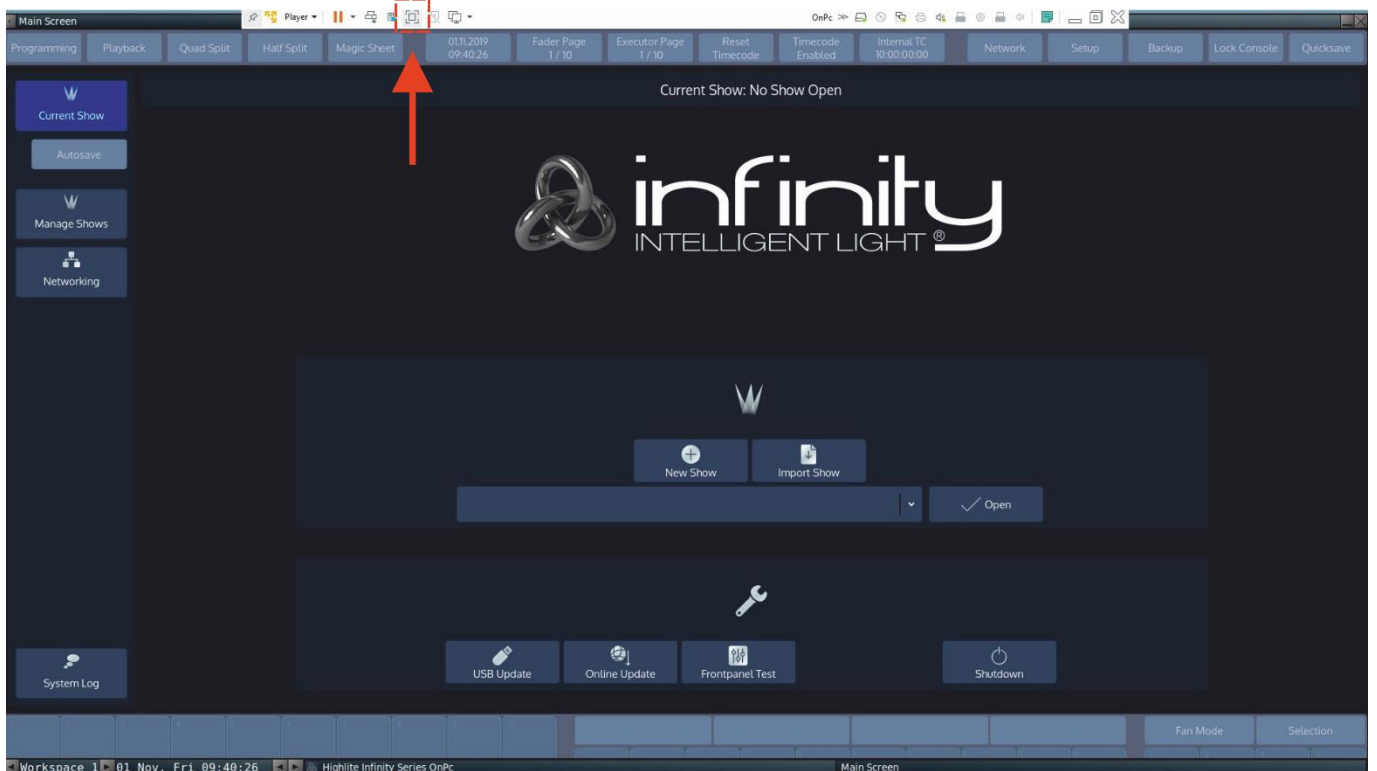
14) A new window will open. In this window go to the onPC-software folder and select **onPC**.



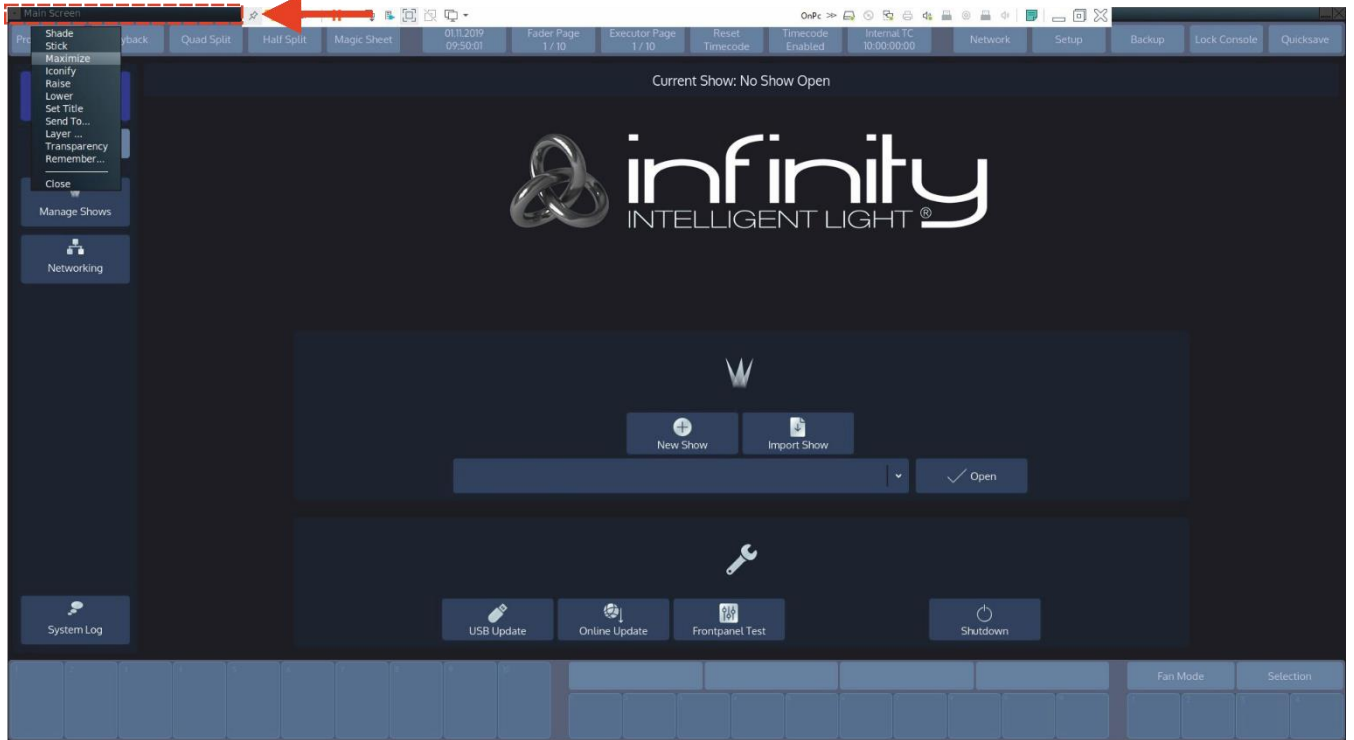
15) Select in the VMware player **onPC** and use the option **Play Virtual Machine**.



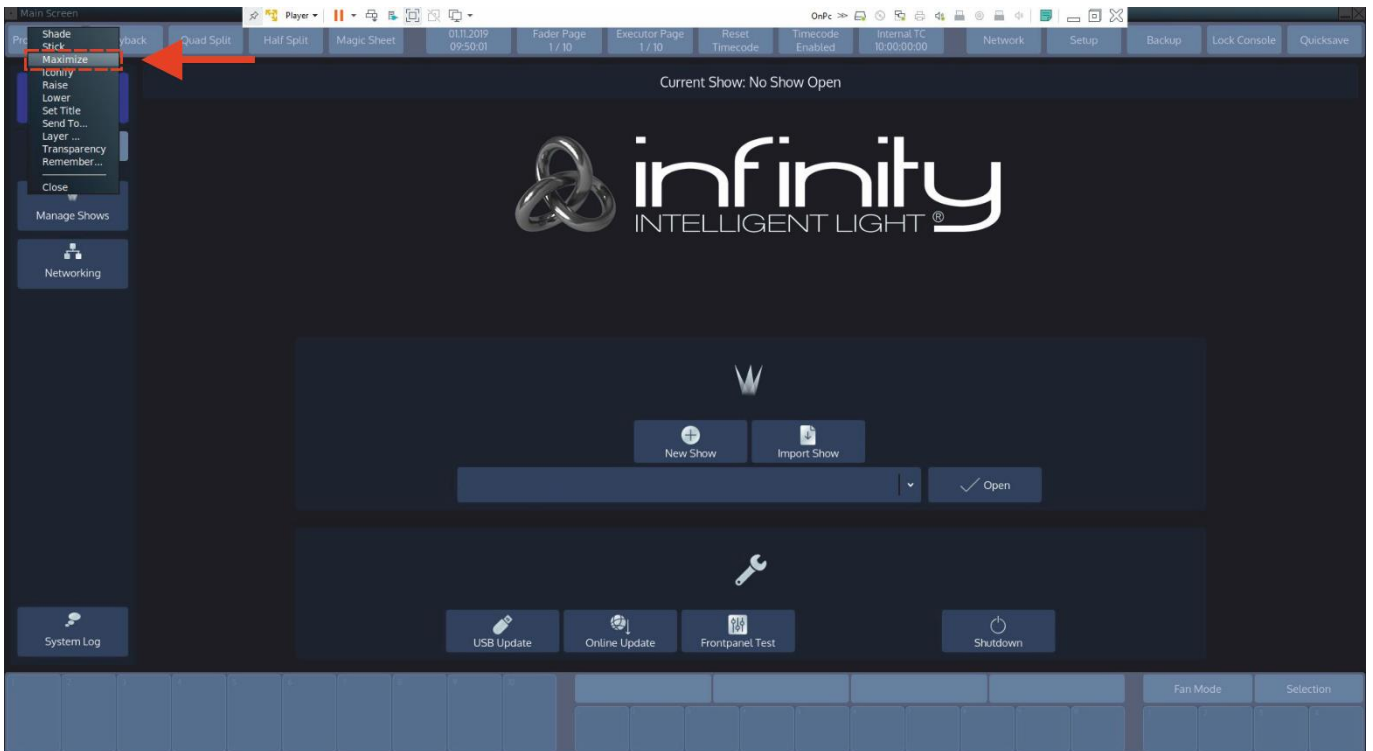
16) A new window will open. Select the **Maximize-button** to properly use the full-screen option.



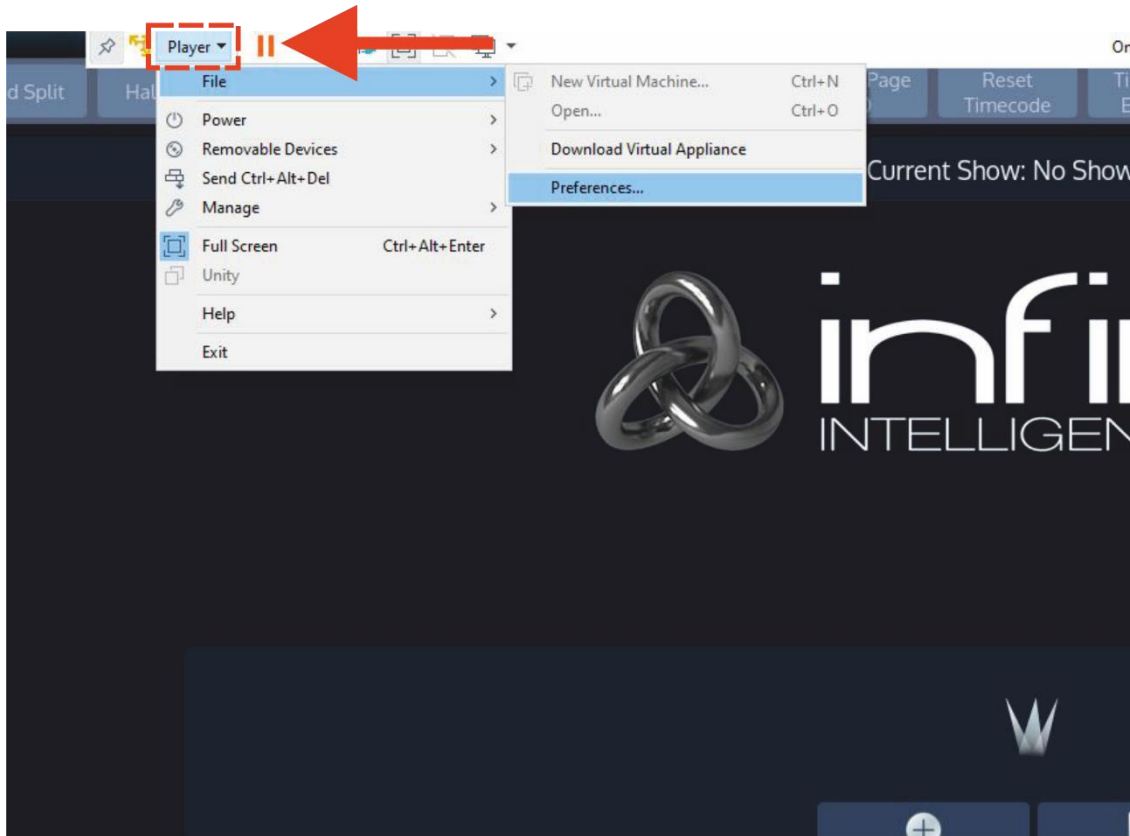
17) In the editor window, go to the **Main Screen**.



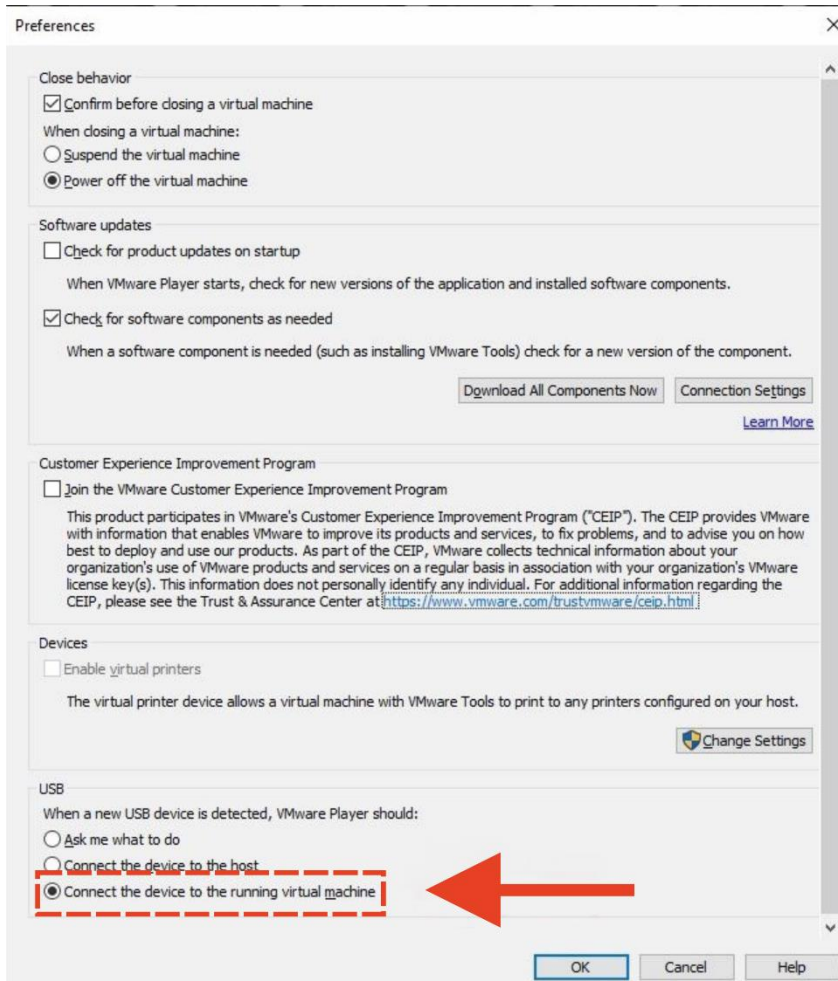
18) And **with the right-mouse button** on **Main Screen**, select the maximize option for showing the Playback and Executor-buttons.



19) Go to the **Player** tab and select in the **File** pull-down menu, the **preferences** tab.



20) Select the option **Connect the device to the running Machine**.



Design and product specifications are subject to change without prior notice.



Email: service@highlite.com
Forum: forum.highlite.com



©2020 Infinity